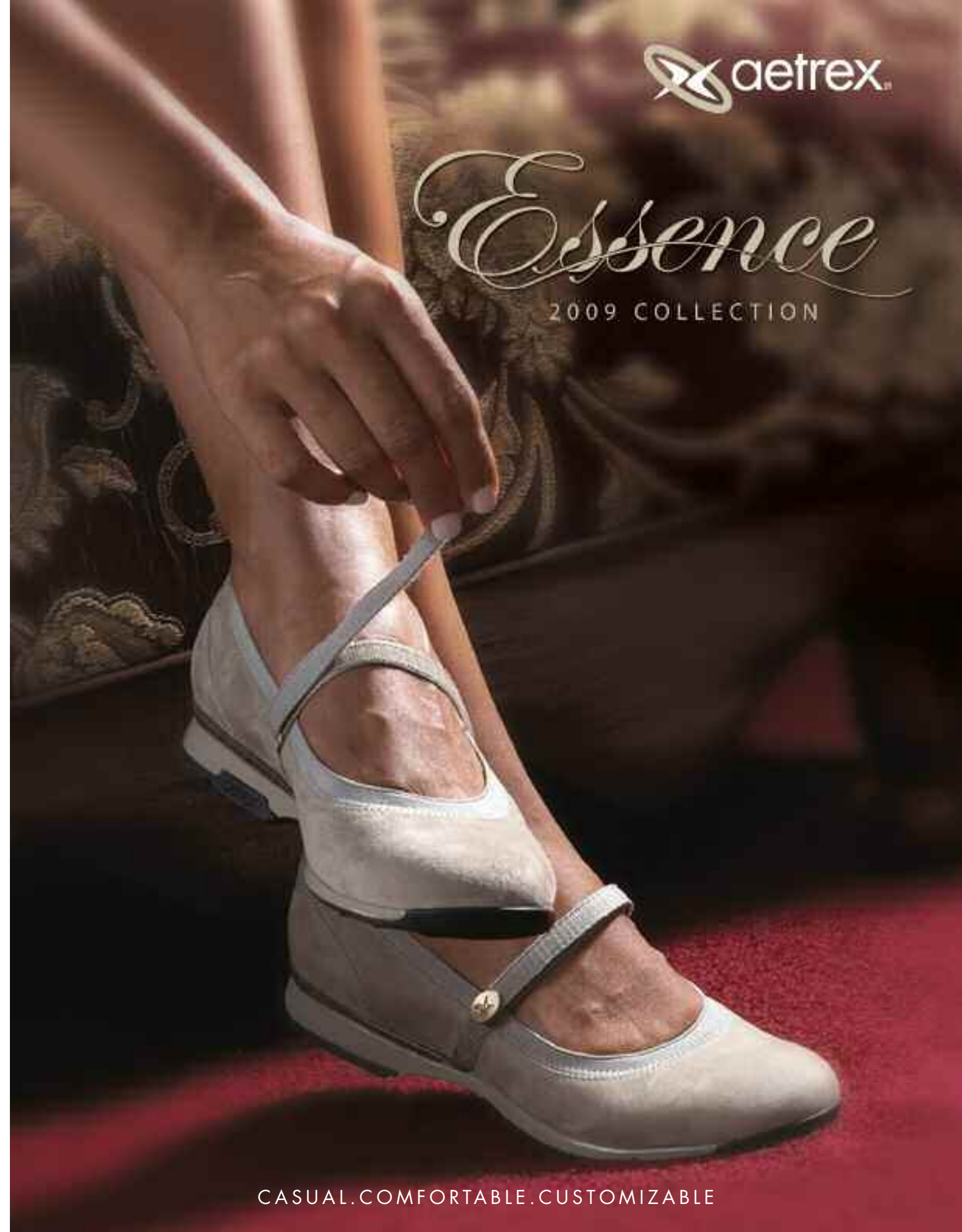


 aetrex.[®]

Essence

2009 COLLECTION



CASUAL.COMFORTABLE.CUSTOMIZABLE

Customized Comfort Has Never Looked So Good.

Aetrex is pleased to present the 2009 Essence Collection. This extraordinary collection of women's casual footwear offers consumers an uncompromised merger of fashion, function and customization.

Created by renowned footwear designer Susan Ryder, this expanded collection comes in three categories that together capture all aspects of life in our more casual yet challenging world: Essential Spirit, Essential Elegance and Essential Living. The overall goal is to allow women to live life to the fullest, with customizable footwear helping every step of the way.

All footwear in the Essence Collection features Aetrex's patented Mozaic™ Customization Technology. With Mozaic, all styles can be immediately customized for each consumer to ensure the ultimate in comfort and function.

We encourage you to read this catalog in detail and learn how this exceptional collection can help you provide your customers with a footwear experience like no other.

Essence
2009 COLLECTION



Utilizing iStep® Technology and Mozaic,™ Essence can quickly and easily relieve foot pressure and provide customized comfort.



Essential Spirit

Casual styles for the active woman on the go

- TPU heel counter reinforcement for added stability
- Innovative, medial support pod to minimize pronation
 - Gradual toe spring for smooth weight transfer during gait cycle
 - Polyurethane midsole provides cushioning and support
 - Rubber outsole for shock absorption and resilience
 - Patented, Mozaic insole for customization



Sizes: 5 - 11
Removable Depth: 3/16"



Mozaic Customization Insole



- LIZZY - Green Single Strap (ES37)**
- Genuine, high end suede and mesh upper
 - Adjustable strap closure for optimum fit
 - Breathable fabric linings that wick moisture
 - Widths available: M, W



- LIZZY - Black Single Strap (ES30)**
- Genuine, high end leather and suede upper
 - Adjustable strap closure for optimum fit
 - Breathable fabric linings that wick moisture
 - Widths available: M, W



- LIZZY - White Single Strap (ES32)**
- Genuine, high end leather upper
 - Adjustable strap closure for optimum fit
 - Breathable fabric linings that wick moisture
 - Widths available: M, W



- ABBEY - Black Double Strap (ES80)**
- Genuine, high end leather and suede upper
 - Double adjustable strap closure for optimum fit
 - Breathable fabric linings that wick moisture
 - Widths available: M, W



- ELLIE - Black Lace Up (ES70)**
- Genuine, high end leather and suede upper
 - Stylish lacing system
 - Soft nylon linings that wick moisture
 - Widths available: M, W



- ABBEY - White Double Strap (ES82)**
- Genuine, high end leather upper
 - Double adjustable strap closure for optimum fit
 - Breathable fabric linings that wick moisture
 - Widths available: M, W



- ELLIE - White Lace Up (ES72)**
- Genuine, high end leather and mesh upper
 - Stylish lacing system
 - Soft nylon linings that wick moisture
 - Widths available: M, W



- ABBEY - Dove Double Strap (ES88)**
- Genuine, high end leather and suede upper
 - Double adjustable strap closure for optimum fit
 - Breathable fabric linings that wick moisture
 - Widths available: M, W



- ELLIE - Brown Lace Up (ES71)**
- Genuine, high end suede and mesh upper
 - Stylish lacing system
 - Soft nylon linings that wick moisture
 - Widths available: M, W



Essential Elegance

Casual elegance for when you must look your best

- Soft leather linings for maximum comfort & breathability
- TPU heel counter reinforcement for added stability
- Innovative, medial support pod to minimize pronation
- Polyurethane midsole provides cushioning and support
- Rubber outsole for shock absorption and resilience
- Patented, Mozaic insole for customization



Sizes: 5 - 11
Removable Depth: 3/16"

Mozaic Customization Insole



CAROLINE - Black Single Strap (EE30)
- Premium suede upper with elastic gore topline
- Adjustable strap closure for optimum fit
- Widths available: M,W



CAROLINE - Brown Single Strap (EE31)
- Premium suede upper with elastic gore topline
- Adjustable strap closure for optimum fit
- Widths available: M,W



CAROLINE - Taupe Single Strap (EE33)
- Premium suede upper with elastic gore topline
- Adjustable strap closure for optimum fit
- Widths available: M,W



JACKIE - Black T-Strap (EE90)
- Premium suede and patent upper
- Adjustable t-strap closure for optimum fit
- Widths available: M,W



JACKIE - Taupe T-Strap (EE93)
- Elegant textile and patent upper
- Adjustable t-strap closure for optimum fit
- Widths available: M,W



ANNA - Black Double Strap (EE80)
- Elegant textile and crinkled patent leather upper
- Double adjustable strap closure for optimum fit
- Widths available: M,W



ANNA - Taupe Double Strap (EE83)
- Elegant textile and crinkled patent leather upper
- Double adjustable strap closure for optimum fit
- Widths available: M,W



NANCY - Black Buckle Loafer (EE20)
- Embossed patent leather upper with elastic gore topline
- Slip on with attractive buckle accent
- Widths available: M,W



NANCY - Brown Buckle Loafer (EE21)
- Embossed patent leather upper with elastic gore topline
- Slip on with attractive buckle accent
- Widths available: M,W



Essential Living

Casual styles for the ultimate in comfort and function

- Moisture transferring polyester linings
- Soft, padded collars help reduce heel slippage
- Firm heel counters for stability and control
- Advanced polyurethane outsoles for shock absorption and resilience
- Roomy toe box design provides unmatched forefoot freedom
- Patented, Mozaic Layer for customization

*Sizes: 4.5 – 11, 12, 13
Removable Depth: 1/4"*



Mozaic Customization Layer



MARY JANES



SARAH - Black Buckle (E320)
 - Full grain "hand-burnished" leather upper
 - Sleek, stylish buckle design
 - Widths available: N, M, W, XW



SARAH - Brown Buckle (E321)
 - Full grain "hand-burnished" leather upper
 - Sleek, stylish buckle design
 - Widths available: M, W



SARAH - Olive Buckle (E327)
 - Full grain "hand-burnished" leather upper
 - Sleek, stylish buckle design
 - Widths available: M, W



JULIA - Black Wrap Around (E360)
 - Full grain leather upper - Pebbled texture
 - Sleek wrap around closure
 - Widths available: N, M, W, XW



JULIA - Brown Wrap Around (E361)
 - Full grain leather upper - Pebbled texture
 - Sleek wrap around closure
 - Widths available: M, W, XW



JULIA - Tan Wrap Around (E363)
 - Full grain leather upper
 - Sleek wrap around closure
 - Widths available: M, W, XW



JULIA - Leopard Wrap Around (E367)
 - Full grain leather upper - Leopard texture
 - Sleek wrap around closure
 - Widths available: M, W, XW



GRACE - Black One Strap (E350)
 - Full grain leather and suede upper
 - One-strap closure system
 - Widths available: M, W, XW



LUCY - Black Leather Button (E330)
 - Full grain leather upper
 - Adjustable strap closure system
 - Widths available: M, W, XW



LUCY - Roan Suede Button (E338)
 - Full grain suede upper
 - Adjustable strap closure system
 - Widths available: M, W, XW



LUCY - Patent Croc Button (E335)
 - Rich, embossed patent leather upper
 - Adjustable strap closure system
 - Widths available: M, W, XW



SLIP-ONS



MAGGIE - Black Leather Slip-on (E260)
 - Full grain leather upper
 - Elastic gore reduces heel slippage
 - Widths available: M, W



MAGGIE - Brown Suede Slip-on (E261)
 - Full grain suede upper
 - Elastic gore reduces heel slippage
 - Widths available: M, W



MAGGIE - Tan Printed Slip-on (E269)
 - Full grain leather upper
 - Elastic gore reduces heel slippage
 - Widths available: M, W



LAURA - Black Alligator Slip-on (E250)
 - Full grain alligator textured leather upper
 - Elastic gore reduces heel slippage
 - Widths available: N, M, W, XW



LAURA - Black Alligator Slip-on (E251)
 - Full grain alligator textured leather upper
 - Elastic gore reduces heel slippage
 - Widths available: M, W, XW



ROSALYNN - Snakeskin Slip-on (E230)
 - Full grain leather upper
 - Elastic gore reduces heel slippage
 - Widths available: N, M, W, XW



HILLARY - Black Slip-on (E220)
 - Calf skin leather upper
 - Elastic gore reduces heel slippage
 - Widths available: N, M, W, XW



LACE



BARBARA - Black Leather Low Lace (E740)
 - Full grain leather upper
 - Stylish low lace closure
 - Widths available: M, W, XW



BARBARA - Roan Suede Low Lace (E748)
 - Full grain suede upper
 - Stylish low lace closure
 - Widths available: M, W, XW



BARBARA - Tan Leather Low Lace (E743)
 - Full grain leather upper
 - Stylish low lace closure
 - Widths available: M, W, XW



ELIZA - Black Striped Oxford (E730)
 - Calf skin leather upper
 - Stylish lacing system
 - Widths available: N, M, W, XW



ELIZA - Brown Striped Oxford (E731)
 - Calf skin leather upper
 - Stylish lacing system
 - Widths available: M, W, XW



JANE - Black Leather High Lace (E750)
 - Full grain leather upper
 - Sleek, classic lace up closure
 - Widths available: M, W, XW



JANE - Brown Suede High Lace (E751)
 - Full grain suede upper
 - Sleek, classic lace up closure
 - Widths available: M, W, XW



VELCRO & STRETCHERS



MARY - Black Striped 2 Strap (E830)
 - Calf skin leather upper
 - Double strap closure system
 - Widths available: N, M, W, XW



MARY - Brown Striped 2 Strap (E831)
 - Calf skin leather upper
 - Double strap closure system
 - Widths available: M, W, XW



FRANCES - Single Strap (E820)
 - Full grain leather upper
 - Single strap closure
 - Widths available: M, W, XW



HELEN - Black Stretch Mary Jane (E390)
 - Stretchable spandex upper
 - One strap closure system
 - Widths available: M, W, XW



HELEN - Taupe Stretch Mary Jane (E394)
 - Stretchable spandex upper
 - One strap closure system
 - Widths available: M, W, XW



DOLLY - Black Stretch Comfort Clog (E190)
 - Stretchable spandex upper
 - Open backed, slip-on style
 - Widths available: M, W, XW



DOLLY - Taupe Stretch Comfort Clog (E194)
 - Stretchable spandex upper
 - Open backed, slip-on style
 - Widths available: M, W, XW



Aetrex Offers You a Different Way of Doing Business



Aetrex Integration Programs

Substantially Increase Sales & Margins Per Customer • Dramatically Elevate Your Service
 Differentiate Your Business Through Technology • Provide a Unique Experience for Your Customers



Aetrex Worldwide, Inc.
414 Alfred Avenue • Teaneck, New Jersey 07666
800.526.2739 / www.aetrex.com